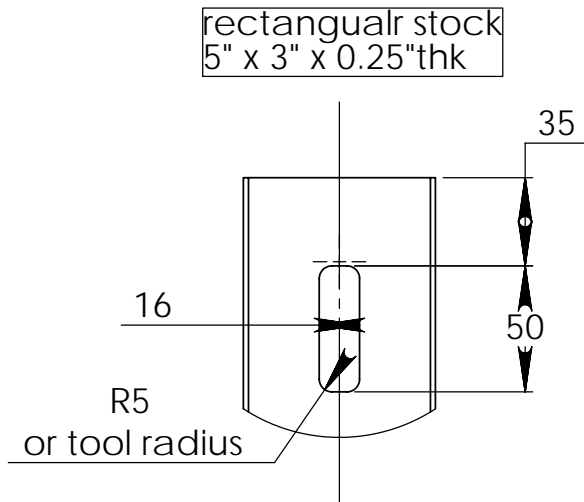
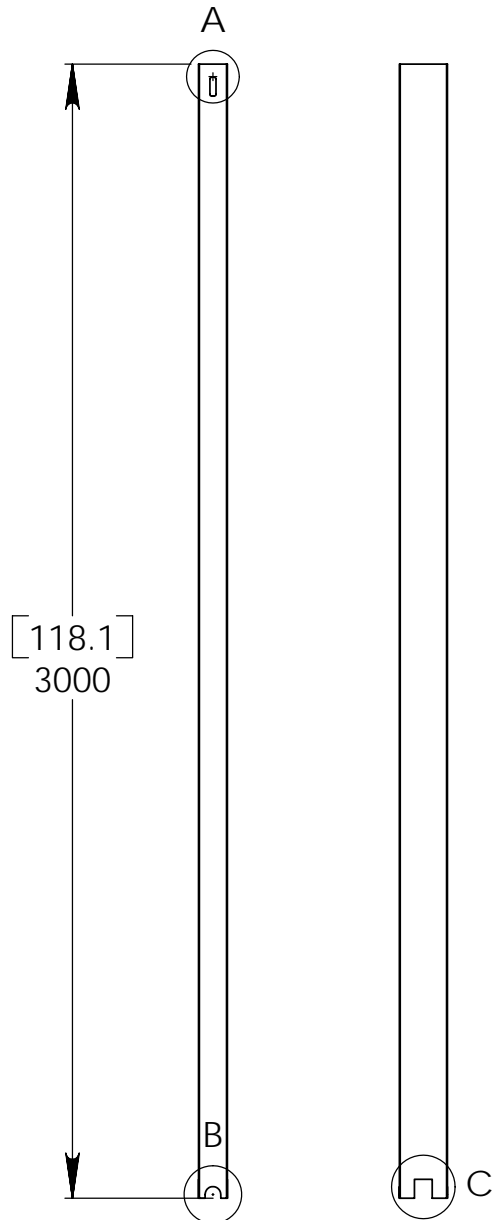
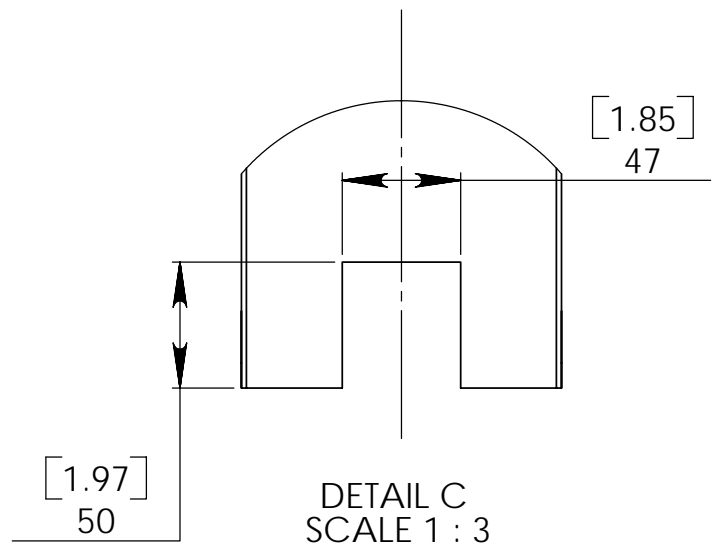


Proprietary rights are included in the information disclosed herein. This information is submitted in confidence and neither the document nor the information disclosed herein shall be reproduced or transferred to other documents for manufacturing or for any other purpose except as specifically authorized in writing by Southwest Windpower.

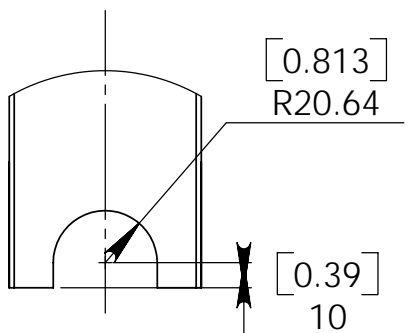
REVISIONS			
#	description	DATE	approved
A	Angle bracket: hole ϕ , dist from bottom & length of angle bracket. Dimensions of lateral support, main stay hole changed to rectangular cut-out.	5/8/6	sid



rectangular through hole
DETAIL A
SCALE 1 : 3



main stay



unless otherwise specified
dimensions are in mm
tolerances are :

fractions	decimals	angles
$\pm 1/16$	X. ± 1.0	± 30
	.X $\pm .5$	
	.XX $\pm .2$	

CAD-generated drawing
do not manually update

Southwest Windpower
Flagstaff, Arizona U.S.A.

APPROVALS	DATE
DRAWN S. Katoley	29 Mar 06
CHECKED	

gin pole

STORM	MATERIAL
next assy used on	FINISH
APPLICATION	DO NOT SCALE DRAWING

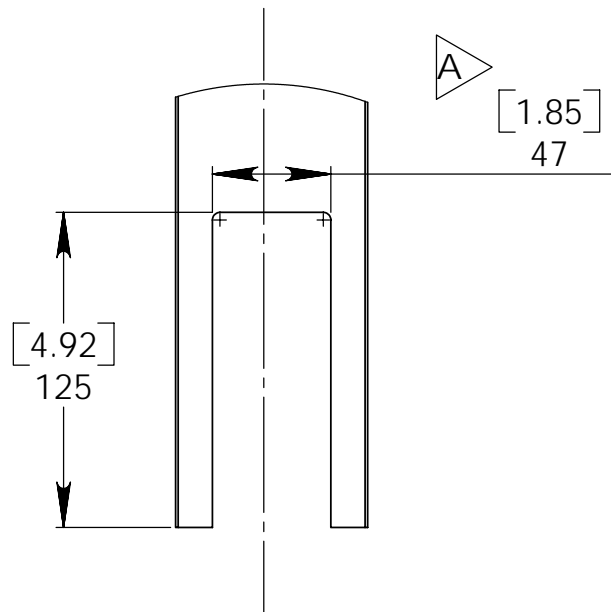
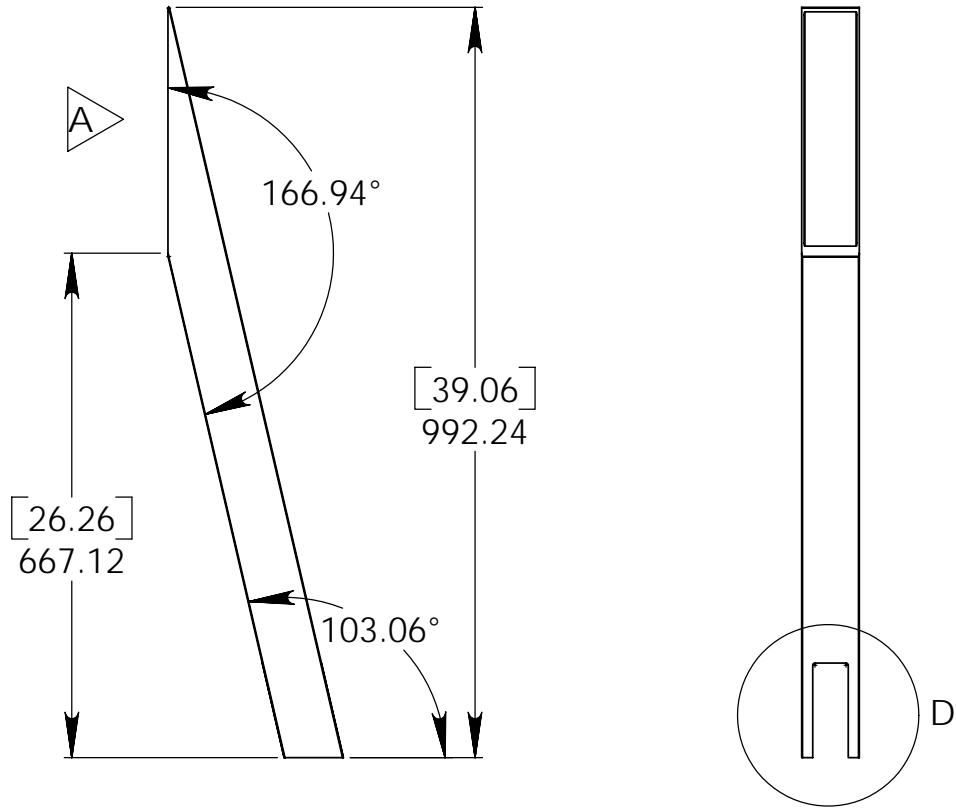
1020 cold draw steel
--

RESP ENG	
MFG ENG	
QUAL ENG	

CAD file : 3CMBP 3054 Rev A Gin pole
dwg.n: 3-CMBP-3054
scale 1 : 20 rev. A size A sheet 1 of 5

Proprietary rights are included in the information disclosed herein. This information is submitted in confidence and neither the document nor the information disclosed herein shall be reproduced or transferred to other documents for manufacturing or for any other purpose except as specifically authorized in writing by Southwest Windpower.

rectangular stock
3" x 3" x 0.125"thk



lateral support

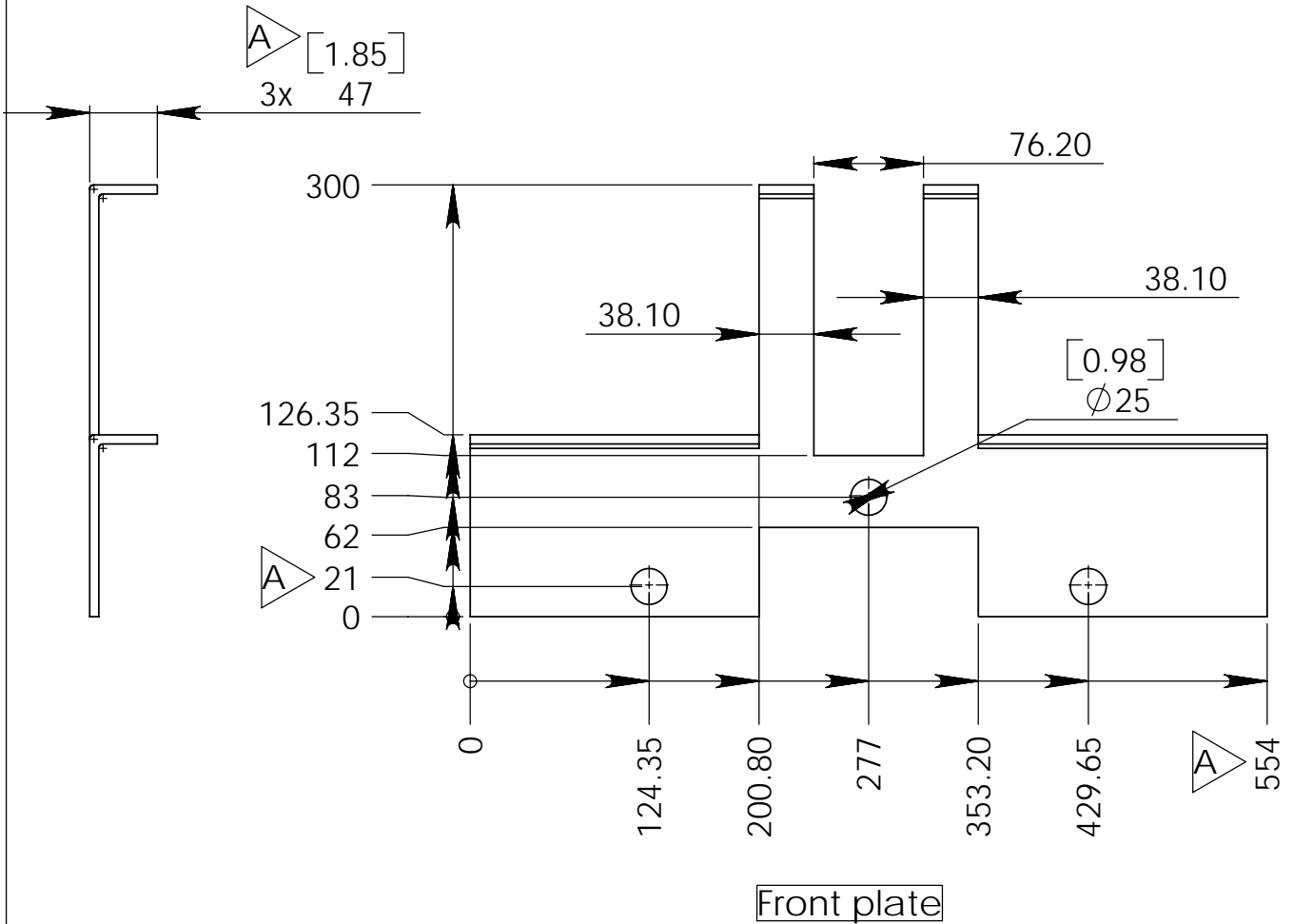
DETAIL D
SCALE 1 : 3

Southwest Windpower
Flagstaff, Arizona U.S.A.

gin pole

dwg. n: 3-CMBP-3054	⊕	☰
scale 1 : 10	size A	sheet 2 of 5

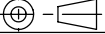
Proprietary rights are included in the information disclosed herein. This information is submitted in confidence and neither the document nor the information disclosed herein shall be reproduced or transferred to other documents for manufacturing or for any other purpose except as specifically authorized in writing by Southwest Windpower.



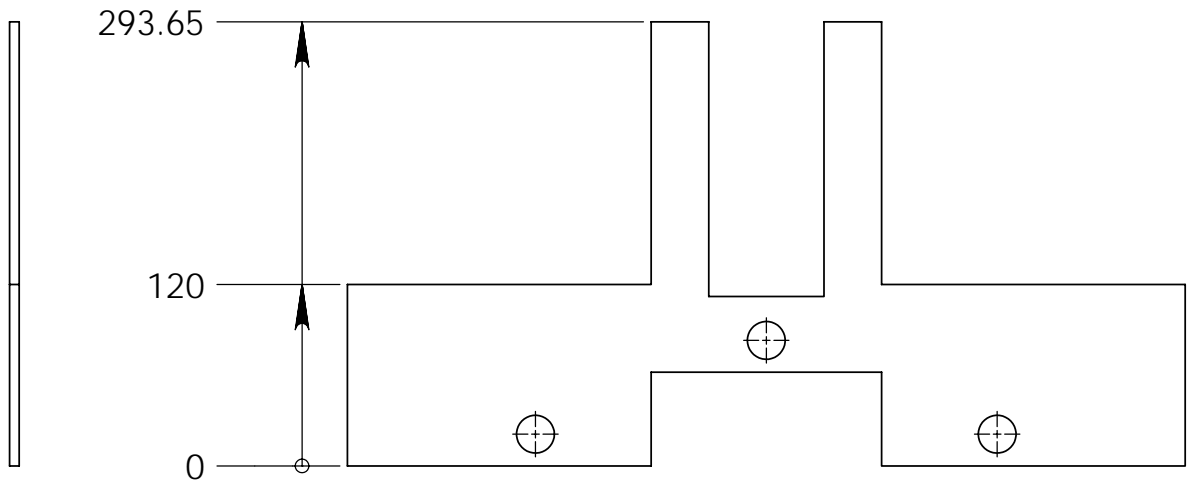
sheet metal flange, front and back
6.35mm (0.25") stock

Southwest Windpower
Flagstaff, Arizona U.S.A.

gin pole

dwg. n: 3-CMBP-3054 
scale 1 : 5 | size A | sheet 3 of 5

Proprietary rights are included in the information disclosed herein. This information is submitted in confidence and neither the document nor the information disclosed herein shall be reproduced or transferred to other documents for manufacturing or for any other purpose except as specifically authorized in writing by Southwest Windpower.

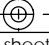
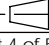


Back plate

Note: For dimensions not specified on back plate refer to view above for front plate.

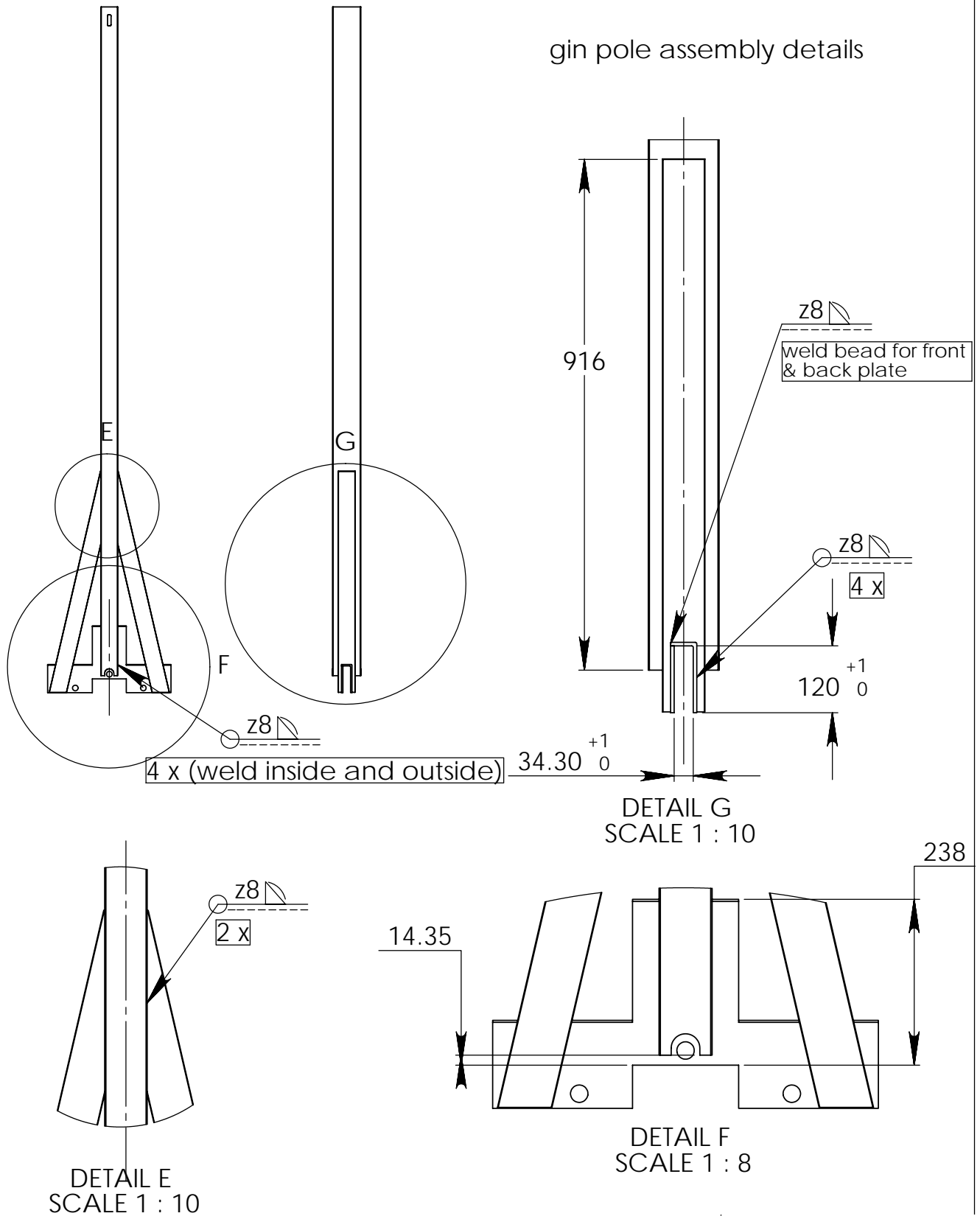
Southwest Windpower
Flagstaff, Arizona U.S.A.

gin pole

dwg. n° 3-CMBP-3054  - 
scale 1 : 5 | size A | sheet 4 of 5

Proprietary rights are included in the information disclosed herein. This information is submitted in confidence and neither the document nor the information disclosed herein shall be reproduced or transferred to other documents for manufacturing or for any other purpose except as specifically authorized in writing by Southwest Windpower.

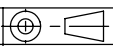
gin pole assembly details



all structural full penetration welds

Southwest Windpower
Flagstaff, Arizona U.S.A.

gin pole

dwg. n° 3-CMBP-3054 
scale size A sheet 5 of 5